

Granttown Heritage Plaques: Station Road

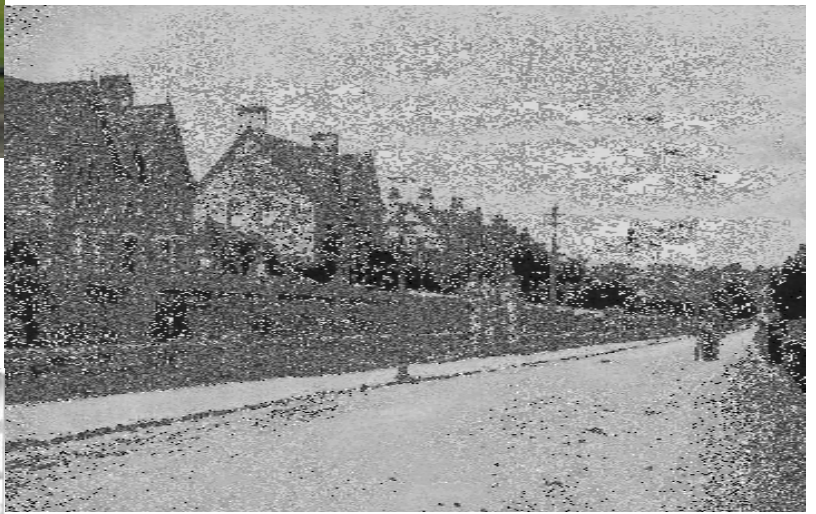


Woodlands Terrace looking towards the site of the old station, Granttown West.

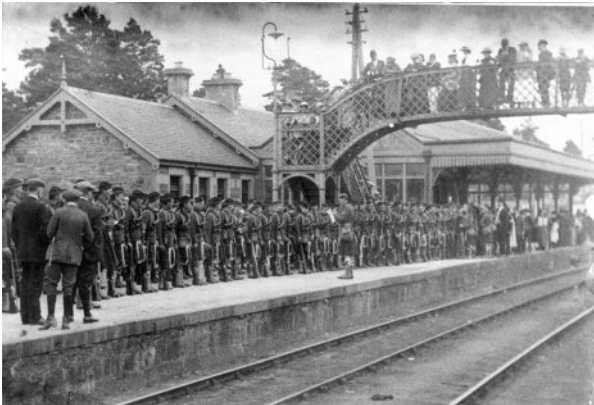
Station Road, now Woodlands Terrace, runs from the road to the Kylintra lotted lands (fields enclosed in Granttown's early days, the partly artificial Kylintra Burn, the Silver Bridge and the "West End Spootie" of 1900.

Here used to be a well which was always a popular meeting place. (An early version of the office water cooler!)

The first three villas beside the road to one of Granttown's two (1863) stations were joined together in the 1920 to create the Craiglynne Hotel.



Woodlands Terrace looking towards the town.



Troops awaiting the train South at Granttown West

During both wars the station played an important role. Not only did it take hundreds of Strathspey men away to fight, many never to return, it also saw the "Jellicoe" trains carrying troops north to their stations at Scapa Flow.

The REME huts were almost adjacent to the station, making Granttown an important base for the repair of military vehicles. In consequence there were military checkpoints around the town including one in front of the Craiglynne.



Granttown West after the Beeching cuts of 1965: a severe blow to Granttown marking the start of a significant decline in tourist numbers and the closure of several hotels.